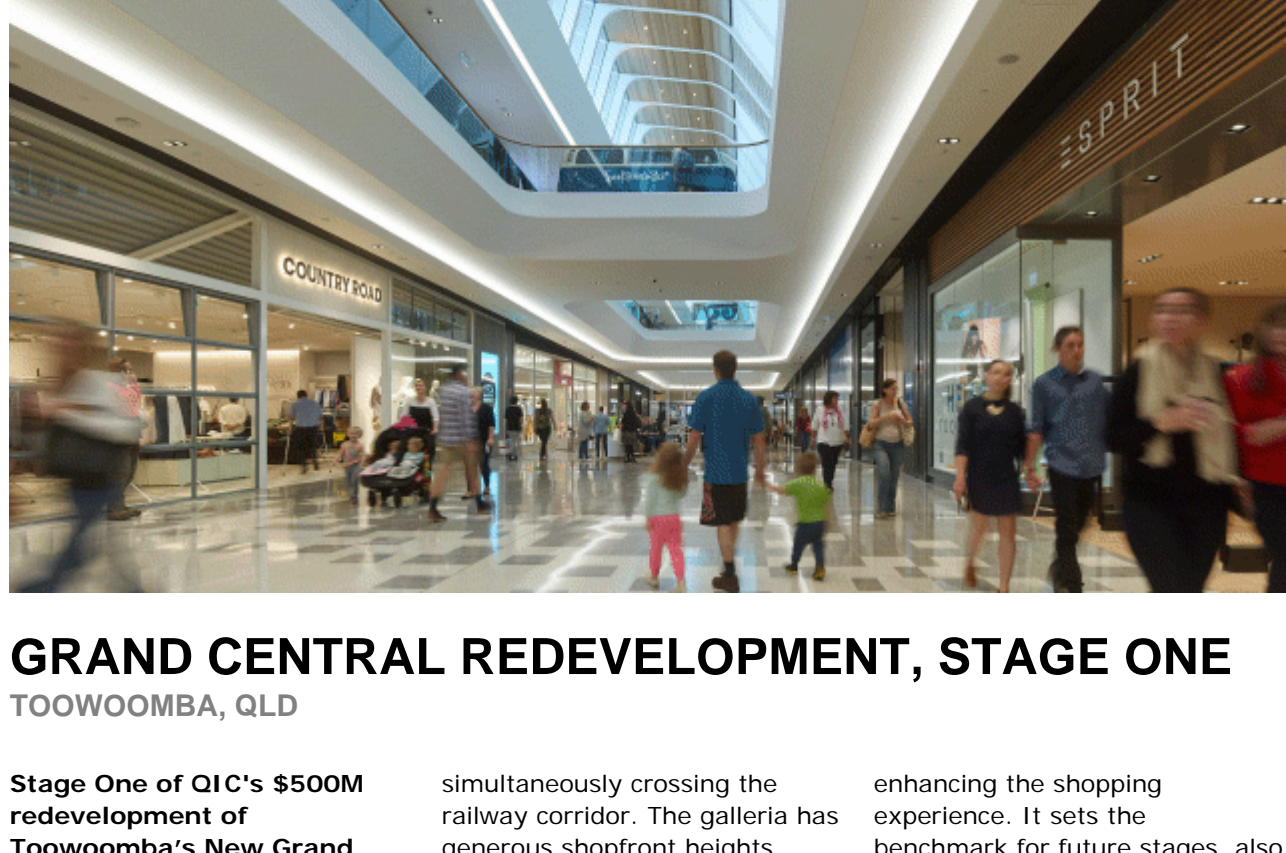


DIRECTIONS

40



GRAND CENTRAL REDEVELOPMENT, STAGE ONE

TOOWOOMBA, QLD

Stage One of QIC's \$500M redevelopment of Toowoomba's New Grand Central Shopping Centre opens with Buchan's two-level retail Galleria design.

The Galleria will ultimately link the existing centre across the railway line, two roads and West Creek to the Toowoomba City Heart. The bridge is subtly ramped to reconcile differing floor levels between the existing centres,

simultaneously crossing the railway corridor. The Galleria has generous shopfront heights (4.5m) to create a relaxed elegance. This is reinforced by continuing southlight windows which run the full length of the space to create a magnetic destination that embodies the tradition, culture and opportunity of the Toowoomba and Darling Downs region. The Galleria is carefully crafted to maximise retail sightlines and visual amenity,

enhancing the shopping experience. It sets the benchmark for future stages, also designed by Buchan and other specialist consultants, opening in 2017.

Buchan's master plan embodies sound retail planning principles, placement of major tenants, clear pedestrian access, appropriate carparking and circulation, and relevant goods servicing provisions. [more ...](#)

VIBRANT NEW LIFESTYLE DESTINATION

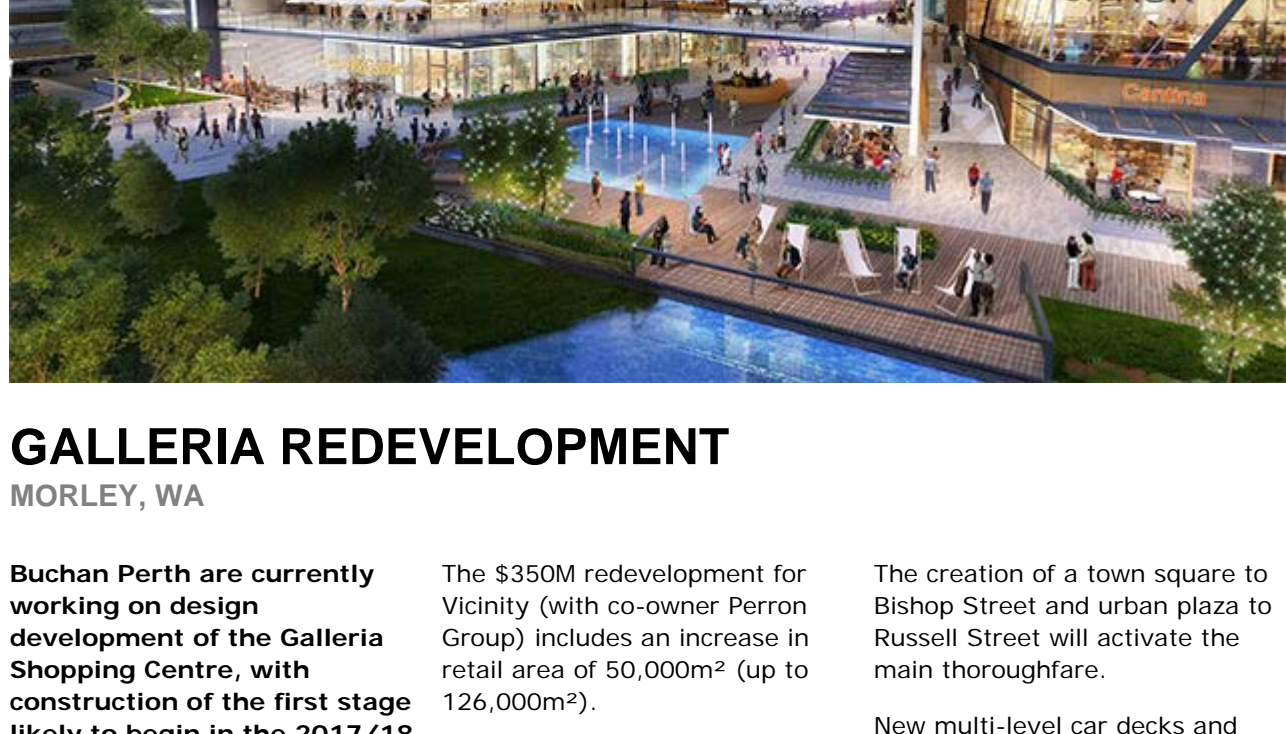
WERRIBEE, VIC

Pacific Werribee's \$370M refresh was recently unveiled by Victorian Treasurer Tim Pallas, delivering a vibrant new one-stop fashion, food and entertainment destination for the local community.

The final stage in the redevelopment introduces a larger, full-line Myer department store and additional specialty stores to complement the existing Urban Diner alfresco dining precinct, Gold Class Village Cinemas, new Target and over 50 specialty stores.

Buchan has long been a part of Pacific Werribee's growth, providing architecture, interior design, signage and wayfinding services for the refurbished malls and creating a new contemporary branded image for the Centre. Buchan also acted as the Executive Architect on the Urban Diner which opened in June 2015, working in collaboration with MGS Architects to conceive the design.

Our concept for the new East-West mall introduces a new generation sculptured and glazed design with wide, sunlit malls, natural materials and marble stone floors characterising the spaces. [more ...](#)



GALLERIA REDEVELOPMENT

MORLEY, WA

Buchan Perth are currently working on design development of the Galleria Shopping Centre, with construction of the first stage likely to begin in the 2017/18 financial year.

The centre is about to undergo its biggest transformation and expansion since its original stages in 1995 (also by The Buchan Group) and will become one of Perth's largest Super Regional Centres and leading retail destinations.

The \$350M redevelopment for Vicinity (with co-owner Perron Group) includes an increase in retail area of 50,000m² (up to 126,000m²).

The redevelopment includes over 100 new specialty stores, comprising international brands, leading Australian designers and fashion stores, as well as a new food precinct with fresh food, gourmet food market hall, food and beverage tenancies, and external dining.

The creation of a town square to Bishop Street and urban plaza to Russell Street will activate the main thoroughfare.

New multi-level car decks and associated road upgrades will integrate with connections to the Morley Bus station.

Future development including mixed use commercial and residential will see the centre eventually expand to 260,000m². [more ...](#)



RIVERS RESIDENCE WINS STEEL AWARD

FREMANTLE, WA

Rivers Residence has won the WA Australian Steel Institute's 2016 Steel Excellence Award for Small Projects.

Evoking the local Fremantle maritime and industrial context via its form and materiality, this contemporary architectural composition is predominantly sculpted in stainless steel to embrace the unique view potential of the site.

The two storey residential 'container' appears buoyant above the rocky landscape to the east, and is differentiated from the base with a sinuous satin stainless steel skin. [more ...](#)

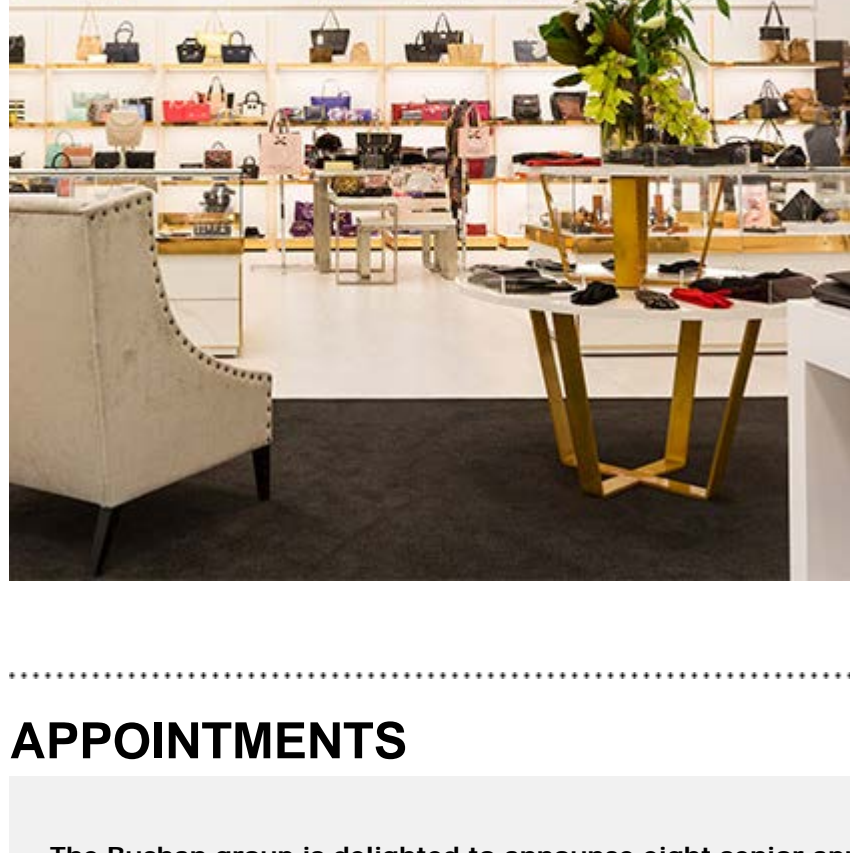
BELMONT FORUM REDEVELOPMENT

PERTH, WA

Buchan Perth has completed the design for a \$65M redevelopment of Belmont Forum, for Perron Group.

Recently completed work at the Centre, also by Buchan, includes one of WA's first ALDI stores.

The final stage of the redevelopment will comprise a new Coles Supermarket and Fresh Food precinct, as well as a new Dining precinct with Alfresco seating facing Belmont Avenue. The existing entries will be upgraded, and new finishes applied to malls throughout, including new skylights. [more ...](#)



GLOWING REVIEWS FOR BALLANTYNES

CHRISTCHURCH, NZ

The newly opened revamp of the Ballantynes Accessories Department in Christchurch was driven by two factors: the Ballantynes shoppers' expectation of luxury and exclusivity, and the desire to fittingly showcase the store's stable of upmarket labels.

Approximately 250m² of retail space has been enhanced into easily navigable sections, while also gracefully linking to neighbouring departments.

A sophisticated atmosphere has been achieved through the use of porcelain tile, marble, and fine gold detailing, which creates reflection and movement as customers circulate. [more ...](#)

APPOINTMENTS

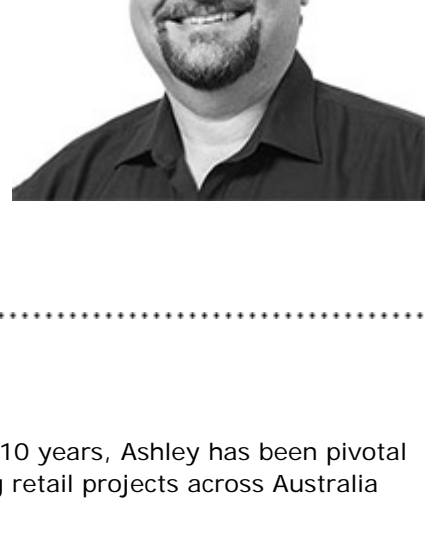
The Buchan group is delighted to announce eight senior appointments with the promotion of Anthony Palamara to Director, Ashley Sheppard to Principal, Marie Ng and Brett Wilson to Senior Associate and Peter Haswell, Chiara Karamaneas, Mark Kozakiewicz and Tracey Shaw to Associate.

Anthony Palamara | Director

Anthony has been appointed a Director in our Sydney office, having managed the office for the past five years and been Design Principal for their projects in Australia and China.

He joined the Buchan Group in 1995, having had previous experience with Lend Lease Design Group, and has continued to build on his significant expertise in retail and mixed-use master planning.

Under Anthony's leadership, the Sydney office has evolved into a multi-skilled design and delivery-based office where architecture, interior, and graphic design work together to achieve our clients' goals. [more ...](#)



Ashley Sheppard | Principal

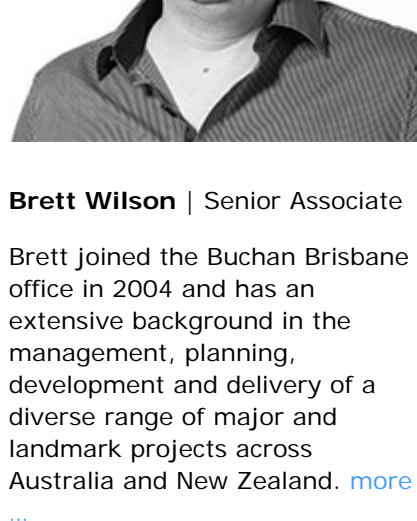
With a career at Buchan spanning 10 years, Ashley has been pivotal in some of the firm's most defining retail projects across Australia and the U.K.

As a lead designer on Emporium Melbourne, Ashley made a significant contribution to one of the most phenomenal retail developments in the Melbourne CBD. The uniquely urban shopping destination forms the middle link in the pedestrian chain of Australia's most powerful CBD retail precinct, linking Myer, David Jones, Melbourne Central, The Strand Arcade and Melbourne's GPO. [more ...](#)



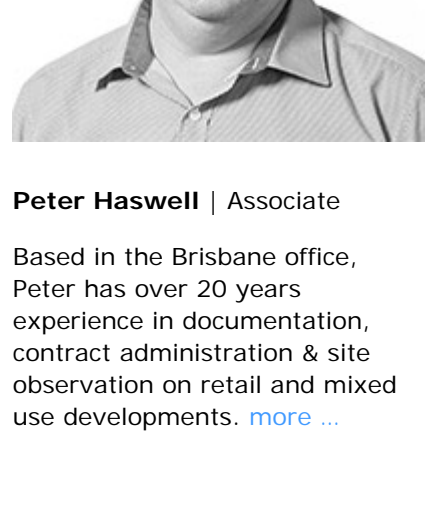
Marie Ng | Senior Associate

Marie is an internationally recognised, award winning designer. In the decade since she graduated with first class honours from the University of NSW, Marie has developed a speciality in Retail, Mixed-Use and Hospitality projects. [more ...](#)



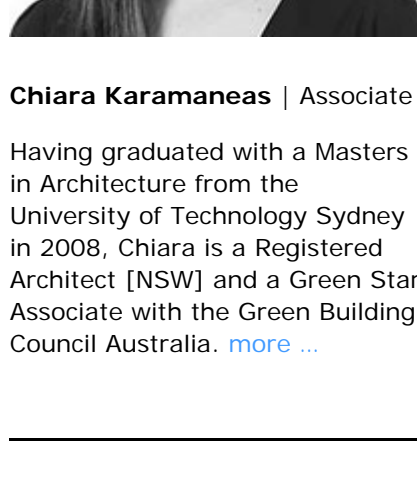
Brett Wilson | Senior Associate

Brett joined the Buchan Group office in 2004 and has an extensive background in the management, planning, development and delivery of a diverse range of major and landmark projects across Australia and New Zealand. [more ...](#)



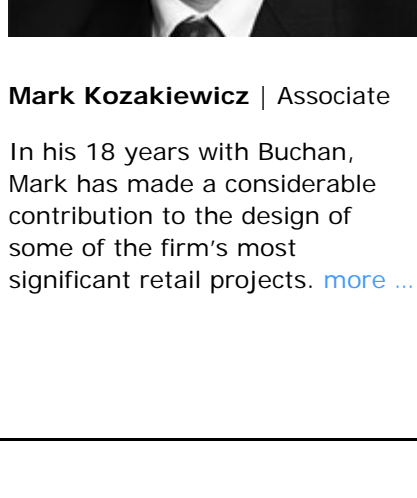
Peter Haswell | Associate

Based in the Brisbane office, Peter has over 20 years experience in documentation, contract administration & site observation on retail and mixed use developments. [more ...](#)



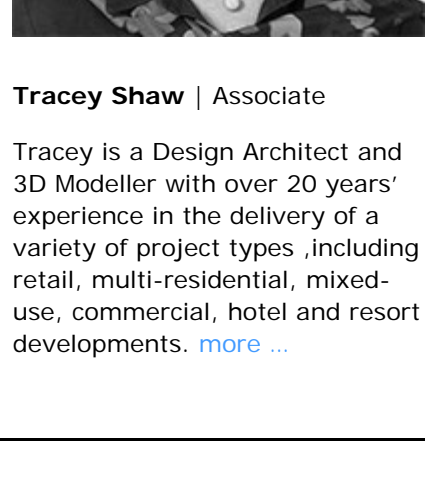
Chiara Karamaneas | Associate

Having graduated with a Masters in Architecture from the University of Technology Sydney in 2008, Chiara is a Registered Architect [NSW] and a Green Star Associate with the Green Building Council Australia. [more ...](#)



Mark Kozakiewicz | Associate

In his 18 years with Buchan, Mark has made a considerable contribution to the design of some of the firm's most significant retail projects. [more ...](#)



Tracey Shaw | Associate

Tracey is a Design Architect and 3D Modeller with over 20 years' experience in the delivery of a variety of project types, including retail, multi-residential, mixed-use, commercial, hotel and resort developments. [more ...](#)