

DIRECTIONS 43



BUCHAN PRESENTS RESIDENTIAL RARITY

NORTHCOTE, VIC

The boutique four storey development for Landream comprises 35 townhouses and nine apartments that capitalise on the sloping site.

Positioned near the peak of Northcote Hill, many residences afford panoramic views towards the city and picturesque inner suburban Melbourne.

Crafted with liveability in mind, the enduring and contemporary interiors offer open plan living spaces with engineered timber flooring, European appliances and reconstituted stone bench tops.

Each home benefits from a generous courtyard,

balcony or terrace and a sense of community is derived from the central private garden. A water feature reflects the development's elegant contemporary design and presents a quiet, contemplative space for residents. [more ...](#)



CLEVELAND POINT

BRISBANE, QLD

Brisbane's historic Cleveland Point will soon welcome an exciting residential development, designed to protect and showcase Queensland's oldest and largest Banyan Fig tree.

The new development has been carefully designed to integrate with the heritage-listed tree and the building's coastal fringe surroundings.

The majestic Banyan Fig tree on the site has a 12-metre trunk with an extensive root system underneath, so it was important to develop a design that would not impact the tree, both now and in the future.

Upon completion, the residential complex will consist of 33 boutique apartments [more ...](#)

HUNT CLUB VILLAGE

CRANBOURNE EAST, VIC

The Hunt Club Village has delivered the final piece of the lifestyle puzzle for residents of the Hunt Club Estate. The much anticipated shopping centre has cemented the standard for community living in Melbourne's south-east.

Featuring state-of-the-art schools, a children's centre and a retirement village, the wider Hunt Club Estate is founded on a range of amenities and services within a natural environment. A sense of community is fostered through the surrounding wetlands and parks featuring pathways for cycling and walking. [more ...](#)



ROYAL NATIONAL AGRICULTURAL HUB

BRISBANE, QLD

The regeneration of Brisbane's Showgrounds will see pavilions and food outlets transform into the social, creative and community retail concept, Kings Co-op in the coming months.

Located at the northern end of King Street in Bowen Hills, Kings Co-op forms a significant part of the history of the Brisbane Exhibition, known locally as the "Ekka", and includes the Royal Snack Bar, Sugar Pavilion and the Dairy Hall Pavilion.

Featuring sections constructed progressively during the past century, the Kings Co-op redevelopment will showcase prime retail, food and beverage offerings, and provide seasonal function spaces and a multi-deck carpark.

In a design that links the cultural heritage and urban future aspirations of the Brisbane Showgrounds Master Plan,

the transformed space will incorporate rescued materials from key warehouse and pavilion structures within the showgrounds precinct.

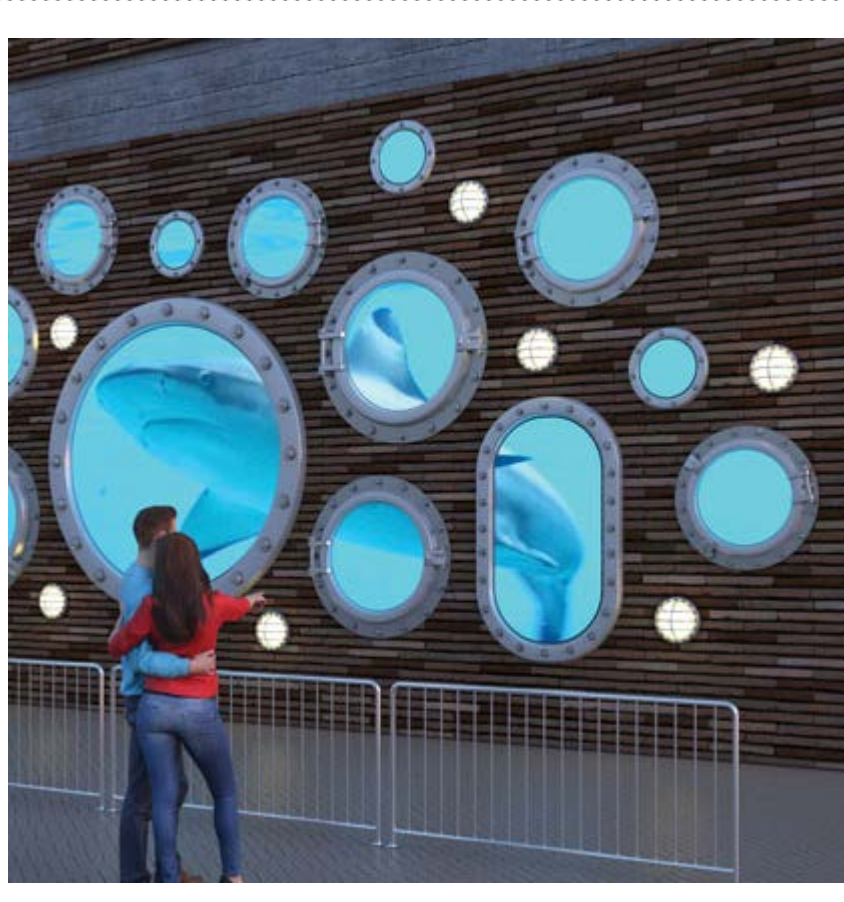
Led by Senior Associate Paul Watson The Buchan Group is working with RNA's Joint Venture Partner Lendlease on stage three of the 15 year \$2.9 billion Showgrounds regeneration project. [more ...](#)

VIVID FESTIVAL

SYDNEY, NSW

The Buchan Group is thrilled to have been selected again for this year's Vivid Festival, as artist for three installations (inSIGHT, re/FRACTION and Portholes), and collaborator for a further four (Uncovered World, MUSIC|box, 100 Ways to Say I Love You and The Big Red Button).

inSIGHT, which will be located in the Royal Botanic Gardens, recreates one of our most familiar sights--the human face--as a gigantic low-fidelity display. Strands of programmable LEDs are woven through the sculpture, creating voxels at twenty times natural scale. Ever-changing in expression, gender and character, inSIGHT will combine visual representations of sound, weather and other phenomena. [more ...](#)



NEWS



KINGSWAY DA, PERTH

The redevelopment of Kingsway City Shopping Centre is one step closer with Buchan Perth receiving Planning Approval for Stage 1A of this major project in Perth's northern suburbs.

The upgrade will see the existing centre expanded alongside the addition of three freestanding buildings.

A new airlock to the west mall entry will also be added and the existing external West façade will be refurbished with new canopies and finishes.

The detailed design and layout of the development promotes an enhanced level of

pedestrian movement, activity and interaction, whilst providing a focal point and hub for the local community.

Kingsway City Shopping Centre's design proposal incorporates contemporary urban design principles promoting community identity and community liveability at its core.

The proposed development will welcome an exciting international mini major retailer to the centre's 1500m² northern expansion, to strengthen the retailing sector. [more ...](#)



2018 NATIONAL CONFERENCE

Buchan is proud to announce our involvement in the 2018 National Architecture Conference to be held at the Gold Coast.

A submission for the position of Creative Directors for the conference was curated by our Gold Coast office and submitted on behalf of the Gold Coast / Northern Rivers Regional Australian Institute of Architects members.

The nominated Creative Directors are Brett Saville of Buchan Gold Coast and Barry Lee of DBI Design.